

## **The Correlation Between Extrovert-Introvert Personality Trait and The First Grade Students' Speaking Performance at MAN 3 Pekanbaru**

Asmarani Saefiya<sup>1</sup> & Nuardi<sup>1\*</sup>

<sup>1</sup>Universitas Islam Negeri Sultan Syarif Kasim Riau

### **Abstract**

The purpose of this study was to find out the significant correlation between the extrovert-introvert personality trait and their speaking performance at the first-grade students of MAN 3 Pekanbaru. This research used quantitative method with correlational research. The target population of this study was the first grade of students at MAN 3 Pekanbaru. The researcher used lottery in doing cluster sampling to choose 1 from 7 classes to be the sample of this research. The sample was class X Science 1 which consisted of 32 students. In this research, for collecting the data the researcher used questionnaire and test. the researcher distributed the questionnaire to the respondents in order to determine extrovert and introvert students, which consisted of 24 questions developed from indicators of extrovert and introvert and the questions adopted from Eysenck Personality Inventory. Then, the researcher used an oral test to know students' speaking performance. The researcher used correlation coefficient of pearson product moment through SPSS 21.0 to analyze the data. Based on the data, the hypotheses  $H_a$  was accepted and  $H_o$  was rejected. So, it can be concluded that there is a Significant Correlation between Extrovert-Introvert Personality Trait and the First Grade Students' Speaking Performance at MAN 3 Pekanbaru.

**Keywords:** extrovert personality trait, introvert personality trait, speaking performance

### **Introduction**

Speaking is the ability that requires the process of communicative competence, pronunciation, intonation, grammar, and vocabulary. The beginner, speaking exercise is difficult to try. Naturally, they feel confused about the rule, like grammar, vocabulary, pronunciation, and fluency. Some students are afraid of being active in speaking. Many factors influence success in speaking performance. Some of them are; age, gender, intelligence, motivation, language aptitude, preferred learning styles and strategies and the learners attitudes and beliefs. One of the main factors is also personality. Two personality traits whose impact on speaking performance has been the most frequently examined are extrovert and introvert. According to Schustack et all (2020) Personality is everything characteristics which can affect characteristic especially the way of thinking, feeling even behaving of someone. Personality is the supreme realization of the innate idiosyncrasy of a living being and according to the attitude of individuals, there are extrovert and introvert groups of students. According to Hogan in Rahayu (2020) "the dimension of extrovert as sociability, likability, adjustment, prudence, and intellect." Basically, an extrovert is a person who is energized by being around other people. In order to find out whether the extrovert students are better or not in performance than introvert students, the researcher chose MAN 3 Pekanbaru as the place for conducting this research. MAN 3 Pekanbaru is one of senior high schools in Pekanbaru. English is served as a

\*Correspondence: [nuardi@uin-suska.ac.id](mailto:nuardi@uin-suska.ac.id)

compulsory subject that is taught twice a week, with 90 minutes for each meeting which means 180 minutes in a week. English is taught by having a guide to 2013 curriculum where the passing grade is 80. At the school, based on this curriculum, the speaking skill is implemented in the dialog method and giving a speech. The students are expected to achieve better performance, which is to be able to make dialog and practice, to understand expression appropriate to the context and others. The rated aspects of speaking performance are pronunciation, clarity, accuracy, performance skill and fluency. based on the researcher's preliminary study at the school on Monday 14 February 2022, interviewing the English teacher to know how the difference between students' speaking performance and their personality is. As a result, the students who were talkative and outgoing in communication were better than the others. Some of the students enjoyed delivering a speech in front of the classroom. Some of the students were willing and easy to express their opinion. Some of the students were shy to express their opinion. Some of the students were not confident while delivering a speech in front of the classroom. Based on the explanation and the problem experienced by the students above, the researcher was interested in conducting a research entitled: "The Correlation between Extrovert-Introvert Personality Trait and the Frist Grade Students' Speaking Perfomance At MAN 3 Pekanbaru".

### **Methodology**

The design of this research was quantitative method with correlational research design to know whether or not there will be a correlation between extrovert-introvert personality and students speaking Performance. According to Creswell (2012) quantitative is an attempt to investigate the problem is what underlies the researcher to take the data, determine variables and which are then measured by number so that analysis can be carried out accordance with applicable statistical procedures.

On the other hand correlational research is a research that use the correlation statistical test to describe and measure the degree of relationship between two or more variables or sets of scores Creswell (2012). The researcher used the correlation statistical test to describe and measure between those two variable Creswell (2012). It indicated that the researcher used the correlation statistical test to know the correlation between extrovert-introvert personality and students speaking Performance.

### **Result and Discussion**

#### **1. The Students' Extrovert-Introvert Personality Trait score**

The data of the students' Extrovert-Introvert Personality Trait were obtained from students' questionare scores which consist of Students answer 24 items. All items are presented in a simple non-defining context. And transform the test score into 100 for score scale. The description of data the data were in the appendix.

**Table 1**  
**Score of the Students' Personality Trait**

No	Students	Score
1	Student1	58
2	Student 2	63

3	Student3	67
4	Student4	67
5	Student5	63
6	Student6	67
7	Student7	58
8	Student8	75
9	Student9	71
10	Student10	71
11	Student11	71
12	Student12	63
13	Student13	71
14	Student14	75
15	Student15	71
16	Student16	67
17	Student17	63
18	Student18	63
19	Student19	75
20	Student20	83
21	Student21	71
22	Student22	67
23	Student23	67
24	Student24	83
25	Student25	67
26	Student26	58
27	Student27	67
28	Student28	79
29	Student29	63
30	Student30	67
31	Student31	63
32	Student32	75
Total		2189
Mean score		68.41

Based on the table IV.1, there were 32 respondents. The total score of the students' personality trait is 2189, and the mean score of the students' personality traits are 68.41. The frequency distribution of students' test score was obtained by using SPSS 21.0 program version as follows:

**Table 2**  
**Distributive Frequency of Students'**  
**Extrovert-Introvert Personality Trait Score**

No	Score	Frequency	Percentages
1	58	3	9.4%
2	63	7	21.9%
3	67	9	28.1%
4	71	6	18.8%
5	75	4	12.5%
6	79	1	3.1%
7	83	2	6.3%
Total		32	100.0

Based on the table IV.2 above, to determine more about students' Extrovert-Introvert Personality Trait score of consisting 32 respondents. Based on the table IV.1 it can be seen that the frequency of interval 58 was 3 student (9.4%), the frequency of interval 63 was 7 student (21.9%), the frequency of interval 67 was 9 students (28.1%), the frequency of interval 71 was 6 studenta (18.8%), the frequency of interval 75 was 4 students (12.5%), the frequency of interval 79 was 1 student (3.1%), the frequency of interval 83 was 2 student (6.3%).

**1. Students' Speaking Performance**

The data of the Students' Speaking Performance were obtained from students' test scores. The description of data the data were in the appendix.

**Table 3**  
**Score of the Students' Speaking Performance**

No	Students	Score
1	Student1	60
2	Student 2	68
3	Student3	64
4	Student4	74
5	Student5	68

6	Student6	70
7	Student7	62
8	Student8	72
9	Student9	74
10	Student10	68
11	Student11	70
12	Student12	64
13	Student13	72
14	Student14	72
15	Student15	68
16	Student16	70
17	Student17	66
18	Student18	66
19	Student19	66
20	Student20	70
21	Student21	74
22	Student22	76
23	Student23	66
24	Student24	82
25	Student25	64
26	Student26	68
27	Student27	62
28	Student28	82
29	Student29	64
30	Student30	66
31	Student31	68
32	Student32	72
Total		2208
Mean score		69

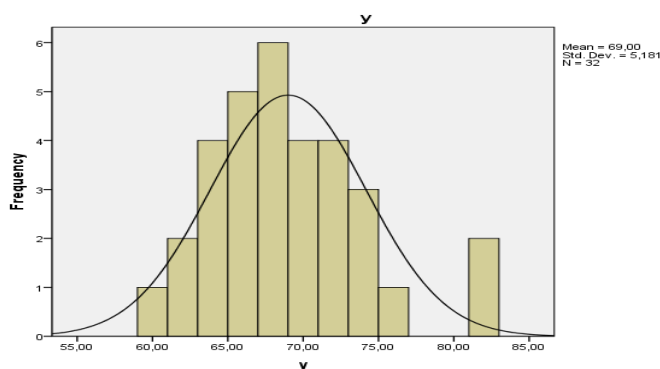
From the table above, the total score of the students' speaking performance is 2208 and the mean score of the students' speaking performance is 69. The frequency distribution of students' Students' Speaking Performance test score was obtained by using SPSS 21.0 program version as follows:

**Table 4**  
**Distributive Frequency of Speaking Performance**

N o	Scor e	Freque ncy	Percentage s
1	60	1	3.1%
2	62	2	6.3%
3	64	4	12.5%
4	66	5	15.6%
5	68	6	18.8%
6	70	4	12.5%
7	72	4	12.5%
8	74	3	9.4%
9	76	1	3.1%
10	82	2	6.3%
Total		32	100.0

To determine more about Students' Speaking Performance score of consisting 32 respondents. Based on the table IV.4 it can be seen that the frequency of interval 60 was 1 student (3.1%), the frequency of interval 62 was 2 students (6,3%), the frequency of interval 64 was 4 students (12.5%), the frequency of interval 66 was 5 students (15.6%), the frequency of interval 68 was 8 students (18.8%), the frequency of interval 70 was 4 students (12.5%), the frequency of interval 72 was 4 student (12.5%), the frequency of interval 74 was 3 students (9.4%), the frequency of interval 76 was 1 student (3.1%), the frequency of interval 82 was 2 students (6.3%). These data shoewed in the chart below:

**Chart 1**  
**Students' Speaking Performance Score Histogram**



The data of students' Speaking Performance were taken from speaking test. The research presents descriptive statistics which is analyzed by using SPSS 21.0 program version. It can be seen as follows:

**Table 5**

**Descriptive Statistics of Students' Speaking Performance**

Descriptive statistics	Speaking Performance
Mean	69.00
Median	68.00
Mode	68
Std. Deviation	5.181
Variance	26.839
Range of Score	22
Minimum Score	60
Maximum Score	82
Total Score	2208

The table presented descriptive statistics of students' speaking performance. It can be seen that its mean score was 69, its median was 68, its mode was 68, its standard deviation was 5.181, and variance was 26.839. While minimum score was 60 and maximum score was 82. So total of the score was 2208. the researcher then processed the result of the speaking ability test. After that, the data were calculated through percentage by using the criteria are as follows ( Riduwan 2002).

**Table 6**

**Criteria of Interpretation Score**

Score	Criteria
0% - 20%	Poor
21% - 40%	Fair
41% - 60%	Average
61% - 80%	Good
81% - 100%	Excellent

Based on the mean score of speaking performance, the mean score was 69, it can be conclude the level of Students' Speaking Performance is Good Level.

**2. The Significant Correlation between Extrovert-Introvert Pesonality Trait and the First Grade Students' Speaking Perfomance at MAN 3 Pekanbaru.**

The normality test was used to know whether the distribution of the data was normal or not. Then, the researcher used SPSS 21.0 program version for normality test

about variable X “students’ Extrovert-Introvert Personality Trait ”, and variable Y “students’ speaking performance”.

**Table 7**  
**Tests of Normality**

Variable	Shapiro-Wilk		
	Statistic	df	Sig.
Extrovert-Introvert Personality Trait	.937	32	.060
Speaking Performancae	.944	32	.094

For normality test, if the significant level (Sig) > 0.05, the data distribution is normal from the data above, it was found that the sig.value of students’ Extrovert-Introvert Personality Trait was 0.060, and the researcher found that the sig.value of the Students’ Speaking Performance was 0.094. It can be concluded that the data distribution is normal. Therefore, the analysis correlation for students’ Extrovert-Introvert Personality Trait toward their Students’ Speaking Performance can be continued.

To find out The Correlation between Students’ Extrovert-Introvert Personality Trait and Their Speaking Performance, they were analyzed by using Pearson Product Moment in SPSS 21.0 program version, and presented at the following table bellow.

**Table 8**  
**The Correlation between Extrovert-Introvert Personality Trait and**  
**the First Grade Students’ Speaking Performance**  
**at MAN 3 Pekanbaru.**

		Extrovert-Introvert Personality Trait	Speaking Performance
Extrovert-Introvert Personality Trait	Pearson Correlation	1	0.678
	Sig. (2-tailed)		<b>0.000</b>
	N	32	32
Speaking Performance	Pearson Correlation	0.678	1
	Sig. (2-tailed)	<b>0.000</b>	
	N	32	32

Based on the table IV.15, it can indicates a sig.value was 0.000<sup>b</sup>. it was small than 0.05 (sig-t <0.05 ). The result the sig. (2-tailed) is 0.000. it can be conclude that, H<sub>0</sub> was rejected and H<sub>a</sub> was accepted. Based on the overall analysis above, the hypotheses H<sub>a</sub> was accepted and H<sub>o</sub> was rejected. So, it can be conclude that “There is a Significant Correlation between Extrovert-



## Introvert Personality Trait and the First Grade Students' Speaking Performance at MAN 3 Pekanbaru”

### Conclusion

The students' Extrovert-Introvert Personality Trait score presented the mean score was 68.41 its median was 67 its mode was 67, its standard deviation was 6.475, and variance was 41.926, minimum score was 58 and maximum score was 83. So sum of the score was 2189. Based on the mean score of students' Extrovert-Introvert Personality Trait, the level of students' Extrovert-Introvert Personality Trait is Very Strong or Strongly Extrovert Level.

The students' Students' Speaking Performance presented the mean score was 69, its median was 68, its mode was 68, its standard deviation was 5.181, and variance was 26.839. while, minimum score was 60 and maximum score was 82. So sum of the score was 2208. Based on the mean score of speaking performance, the level of students' Students' Speaking Performance is Good Level.

it can indicates a sig.value was 0.000<sup>b</sup>. it was small than 0.05 (sig-t <0,05 ). The result . The sig. (2-tailed) is 0.000, it can be conclude that, H<sub>0</sub> was rejected and H<sub>a</sub> was accepted. Based on the overall analysis above, the hypotheses H<sub>a</sub> was accepted and H<sub>0</sub> was rejected. So, it can be conclude that “ There Is Significant Correlation Between Extrovert-Introvert Pesonality Trait And The First Grade Students' Speaking Performance at MAN 3 Pekanbaru”

### References

- Boroujeni. (2015). The impact of extroversion and introversion personality types on efl learners' writing ability. *Theory and Practice in Language Studies*, 213. From <http://dx.doi.org/10.17507/tpls.0501.29> retrieved on 31 Desember 2023
- Brown, H. D. (1994). *Teaching by principles: An interactive approach to language pedagogy*. New Jersey: Prentice Hall Regents.
- (2000). *Principles of language learning & teaching 4th edition*. New York: Pearson Education.
- (2001). *Language assessment principles and classroom practices*. London: Longman.
- (2004). *Language assessment principles and classroom practices*. San Fransisc: Pearson Education.
- Carlson, M. (2004). *Performance: A critical introduction*. London: Clays Ltd.
- Cresswell, J. W. (2012). *Educational research*. Boston: Pearson Education (Placeholder1).
- Cohen, L., Manion, L., & Morrison, K. (2007). *Research Method in Education (Sixth ed)*. New York: Routledge Falmer.

Dewi, H., Hasanul, M., & Sofian, M. (2021). The relationship between students' personality and speaking performance. *ELTIN Journal*, 1. From <https://www.researchgate.net/publication/283348458> Retrieved on 29 November 2021

Dornyei, Z. (2005). *The psychology of the language learner: individual differences in second language acquisition*. New Jersey: Lawrence Erlbaum Associates, Inc.

Eysenck, H. J. (1964). *Manual of the Eysenck personality scales*. London: Hodder & Stoughton.

Gay, L. R., Geoffrey E. Mills and Peter W. Airasian (2012). *Educational research competencies for analysis and applications*. Boston: Pearson Education, Inc.

Handayani, A, P. (2021). The correlation between students' extrovert introvert personality and their speaking ability at the second semester of the speaking class of English education study program of state islamic University Raden Intan Lampung. (Skripsi, Universitas Raden Intan Lampung).

Novita, P., Zuhri, M., & Uswatun, H. (2020). The students' extrovert and introvert personality toward speaking performance. *International Journal of Research on English Teaching and Applied Linguistics*, 39. From <http://ojs.uma.ac.id/index.php/diversita> Retrieved on 17 desember 2021